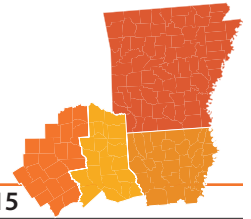




ARK-LA-TEX SCOUT



Serving the local market with drilling activity, permits & deals for sale

Volume 03, No. 15

Regional Activity (State Data)

(11/10/15 to 12/01/15)

	Compls	Permits
Arkansas	32	44
North Louisiana	-	25
East Texas (RRC 5)	1	14
East Texas (RRC 6)	12	15

Most Active Operators by Permits

1	SEECO	41
2	Husqvarna Forestry	12
3	Chesapeake	6

Permits by Formation (by Last Scout)

Formation	12/03	11/12	10/22
Fayetteville	37	5	7
Barnett	9	4	2
Haynesville	8	17	24
Moorefield	4	-	-
Pettit	4	2	2
Gloyd	2	-	-
Rodessa	2	2	1
Smackover	2	-	-
Travis Peak	2	5	3
Other Formations	28	54	40
TOTAL	98	89	79

Source: TXRRC, SONRIS & AOGC

Active Rigs Running (Baker Hughes) **58**

Tanos tests best Overton well to date at 14 MMcfe/d

During Q3, **Tanos Exploration II, LLC** completed its first well on its newly acquired 8,000 acres in Overton field. Targeting the Cotton Valley Sands, the well flowed 11 MMcf/d and 500 bbl/d of condensate, representing the company's best horizontal result in the field to date.

Tanos II is running two rigs in Overton field and plans to keep those rigs active through the end of the year. During Q3, the company completed four horizontals in the field, bringing its total

to 10 horizontals, with nine of those completed and online. The 10 wells have average 30-day IPs of 1,275 boe/d and D&C costs of \$4.5 million. In the last 15 months, Tanos II has grown production at Overton from 750 boe/d to 8,900 boe/d. The company is drilling longer laterals in the field compared with last year.

Located in Smith County, Overton has traditionally been developed with vertical wells. Tanos II began drilling horizontals there in 2014. The company has 20-30 remaining drilling locations.

Sabine tests two Cotton Valley wells above 11 MMcf/d

Texas-focused **Sabine Oil & Gas** completed two wells in Rusk County, Texas, targeting the Cotton Valley in Henderson field. The Byron 4H tested at 11.6 MMcf/d on a 41/64-in. choke and was drilled with a 6,387-ft lateral. The nearby Byron GU 3H, which was drilled with a 5,958-ft lateral, tested at a rate of 11.5 MMcf/d on a 44/64-in. choke.

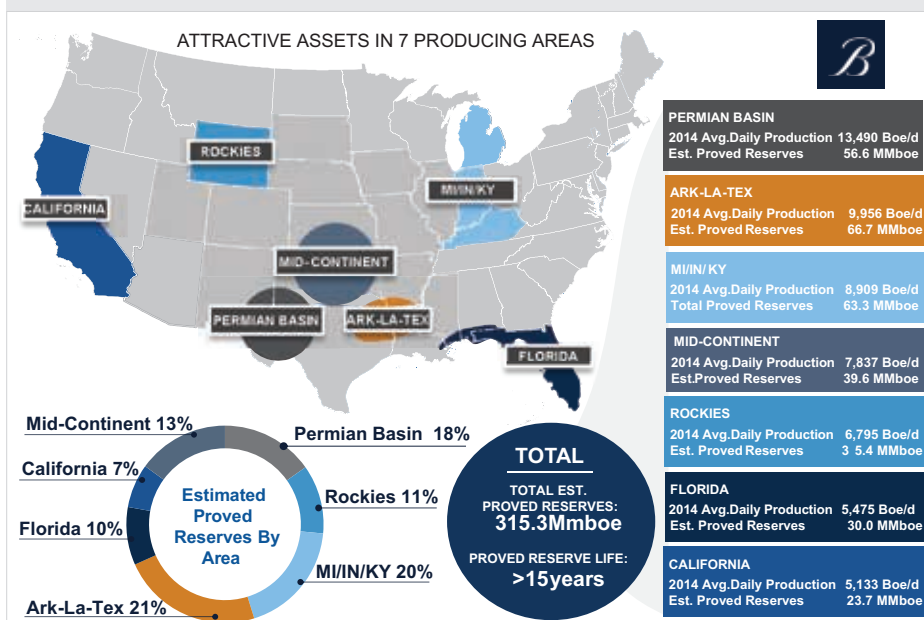
The company's Cotton Valley activity includes more than 100 horizontal wells and more than 1,000 vertical wells, and it operates 88% of them.

Sabine's total East Texas presence consists of 219,200 net acres primarily targeting the Cotton Valley, Haynesville and Pettet, mostly in Harrison, Panola and Rusk counties. Its total proved reserves

Operating more than 100 HZs and 1,000 vertical wells in Cotton Valley.

in the Ark-La-Tex region, including its acreage in Red River Parish, Louisiana, are 1,197 Bcfe (78% gas). As of YE14, the company's average daily production in the region was 170 MMcfe/d.

Breitbart US Reserves & Production Areas



Source: Breitburn Energy Partners November 12, 2015 via PLS docFinder (www.plsx.com/finder)

Deals For Sale

ARKANSAS ACREAGE FOR LEASE

14,000-Acres.

MILLER COUNTY

T17S - R26W; T18S - R26W

All Depths Included.

Located In Active Brown Dense Play.

TERMS NEGOTIABLE

LEASE

Will Entertain Different Structures.

L 5032DV

FREESTONE CO., TEXAS

7,725-Net Acres. 30-Potential HZ Wells.

EAST TEXAS - RED LAKE FIELD

EAGLE FORD & WOODBINE TREND

Obj: Eagle Ford/Sub-Clarksville. 4,500 Ft.

100% OPERATED WI; 75% NRI

Expected IP: 400-800 BOPD

Well Reserves: 75-300 MBO

EAGLE FORD

DV 3741

No Commission. Call 713-650-1212

All Standard Disclaimers & Rights Apply.